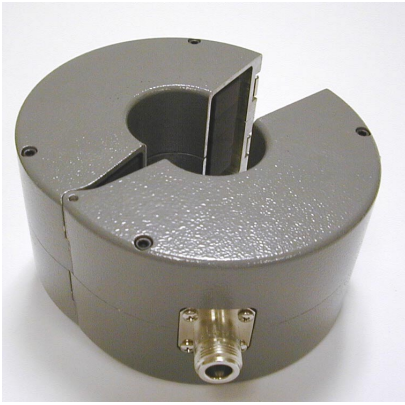
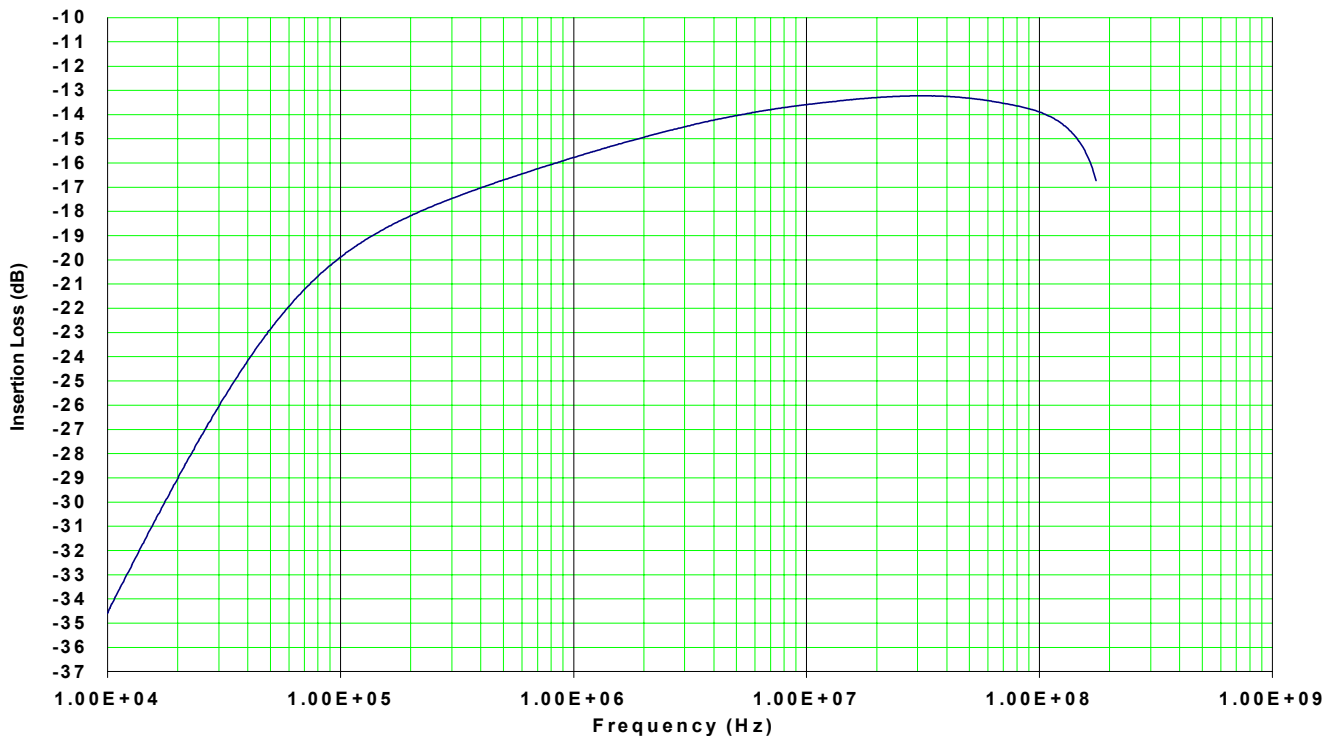


# Bulk Current Injection Probe



The F-120-1 has been designed to extend the use of conducted immunity testing over the bandwidth of 10 kHz – 175 MHz. The F-120-1 is a high efficiency Injection Probe used primarily for low frequency conducted susceptibility testing. The useable frequency range is 10 kHz – 175 MHz with an insertion loss of less than 15 dB between 2 MHz – 150 MHz. The input power rating is 125 watts for 30 minutes.



F - 120 - 1

## F-120-1 Specifications

Frequency: 10 kHz – 175 MHz  
Inner Diameter: 40mm  
Outer diameter: 127mm  
Height: 70mm  
Input Power rating: 100 watts

## Accessories

FCC-BCICF-1 • Calibration Fixture  
Bandwidth: 10 kHz – 400 MHz  
F-52-40mm • Current Probe  
Bandwidth: 10 kHz – 400 MHz



**Fischer Custom Communications, Inc.**

20603 Earl St., Torrance, CA 90503 · Phone: 310-303-3300 Fax 310-371-6268 · email: Sales@fischercc.com

© Fischer Custom Communications, Inc.

All rights reserved • Printed in USA

0208DS-F-120-1